



KELLY HOTHAM

Height 175cm/5'9" Bust 86cm/34" Waist 74cm/29" Hips 96cm/38"
 Shoe 40 EU/9 US/6.5 UK Hair Brown Eyes Brown



TIPS
 ■ For a slimmer silhouette, keep geometric patterns bold yet simple.
 ■ If you prefer a more understated look, make the bottom half of your outfit a darker black colour, and play with colour and print on the top half.
 ■ By focusing in one key piece in this trend – such as a geometric skirt that could be teamed with a block colour crop or more subtle print and a top.
 ■ This look can be worn many ways, a geometric dress like the one pictured looks great with a denim jacket and fish for the weekend, or a complementary blue blazer for the office.

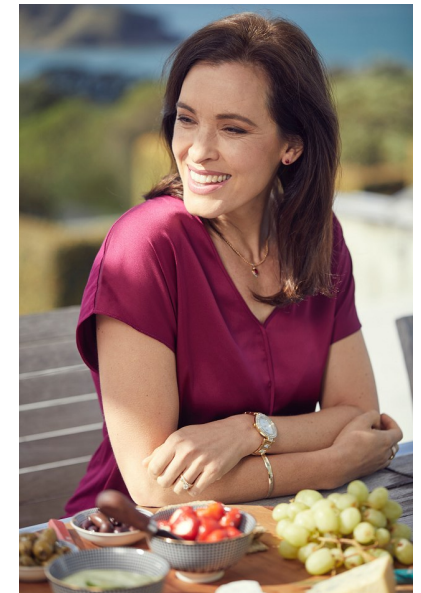
PHOTO: KELLY HOTHAM © PHOTOS: L. ALL RIGHTS ARE RESERVED



GEOMETRIC
 Interior design pieces are increasingly using versatile geometrics in home decor. They work well both as accents in soft furnishings and for bolder statements on walls and floors.
 Homegrown mesh coffee table, Preston, \$240, www.freedenturniture.co.nz

Short-sleeved top, Portman, \$100 (NZD), \$110 (USD) pants, Decades, \$200 (NZD), \$220 (USD), Country Road, \$200, Deep nesting, Larkin, \$120.
OPPOSITE PAGE:
 Crop top and dress, Jacqui, \$100 (NZD), \$110 (USD). Overalls strap earrings, \$30, and handbag, \$100, both Vero Moda.
FOR STOCKISTS see page 19.

OCTOBER 2015 79



2 Morton Street, PO Box 90920, Auckland
 T: +64 9 373 2916 | F: +64 9 379 6834
 Freephone (NZ Only): 0508 4 Red11