



JOANNA TATHAM

Height 175cm/5'9" Bust 86cm/34" Waist 64cm/25" Hips 86cm/34" Dress 8 AUS/4 US/34 EU Shoe 39.5 EU/8.5 US/6 UK Hair Brown Eyes Brown



JOANNA TATHAM

Height 175cm/5'9" Bust 86cm/34" Waist 64cm/25" Hips 86cm/34" Dress 8 AUS/4 US/34 EU Shoe 39.5 EU/8.5 US/6 UK Hair Brown Eyes Brown



THE BOLD AND THE BEAUTIFUL
Inkblot enamel bangle, \$112
Ippa enamel cuff, 284, silver
bangle, \$215, Iron Opal and
Jade Stone Emporio Armani
watch, \$200, Swan DH-Galena,
M. Mikigai silver chain
bracelet, \$282, from the Vault
Ippa enamel cuff, \$36
Swansteel cuff ring, \$275

JEWELLED

BACK THE BUNG THIS SEASON WITH BOLD
PIECES OF SHIMMER AND SPARKLE. SO GO FORTH
ACCESSORISE - DON'T BE SHY.

GRAPHY BY MARESSA FINDLAY

from the Vault

BY A BEAUTY 2004

JOANNA TATHAM

Height 175cm/5'9" Bust 86cm/34" Waist 64cm/25" Hips 86cm/34" Dress 8 AUS/4 US/34 EU Shoe 39.5 EU/8.5 US/6 UK Hair Brown Eyes Brown



JOANNA TATHAM

Height 175cm/5'9" Bust 86cm/34" Waist 64cm/25" Hips 86cm/34" Dress 8 AUS/4 US/34 EU Shoe 39.5 EU/8.5 US/6 UK Hair Brown Eyes Brown



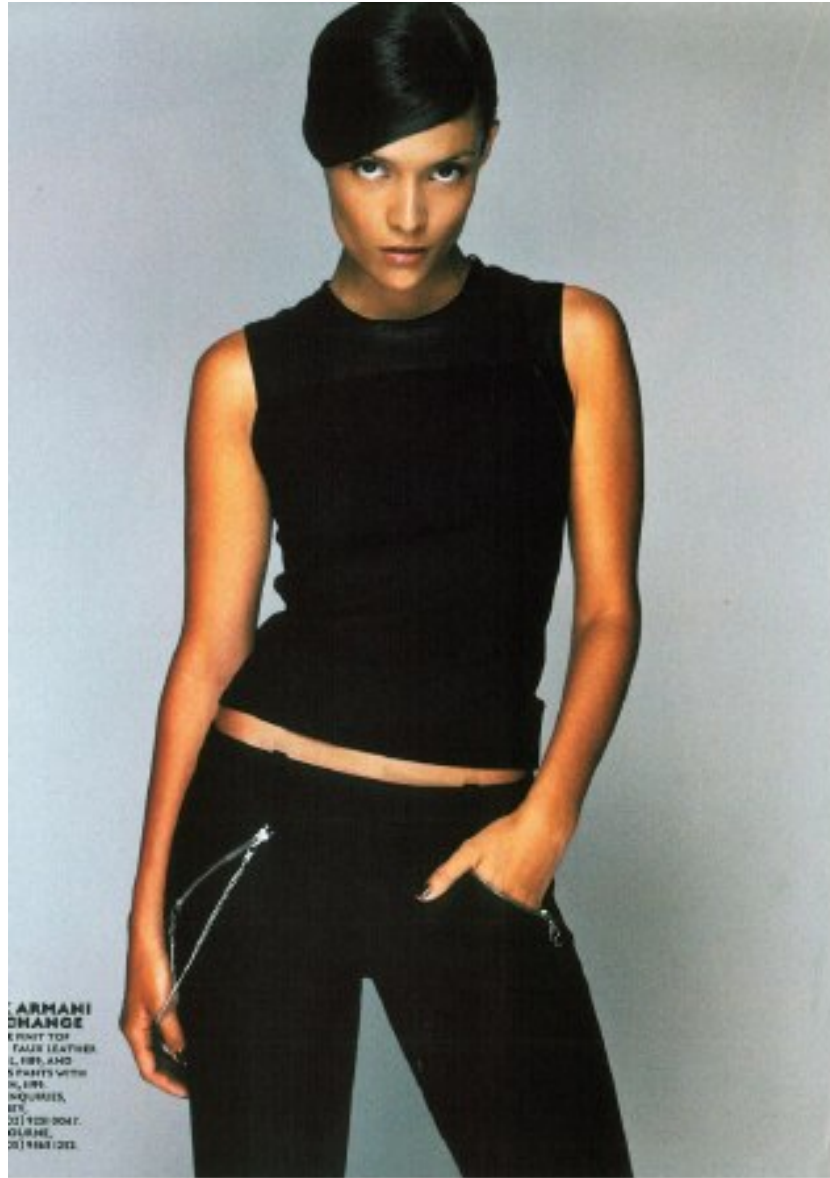
JOANNA TATHAM

Height 175cm/5'9" Bust 86cm/34" Waist 64cm/25" Hips 86cm/34" Dress 8 AUS/4 US/34 EU Shoe 39.5 EU/8.5 US/6 UK Hair Brown Eyes Brown



JOANNA TATHAM

Height 175cm/5'9" Bust 86cm/34" Waist 64cm/25" Hips 86cm/34" Dress 8 AUS/4 US/34 EU Shoe 39.5 EU/8.5 US/6 UK Hair Brown Eyes Brown



JOANNA TATHAM

Height 175cm/5'9" Bust 86cm/34" Waist 64cm/25" Hips 86cm/34" Dress 8 AUS/4 US/34 EU Shoe 39.5 EU/8.5 US/6 UK Hair Brown Eyes Brown



JOANNA TATHAM

Height 175cm/5'9" Bust 86cm/34" Waist 64cm/25" Hips 86cm/34" Dress 8 AUS/4 US/34 EU Shoe 39.5 EU/8.5 US/6 UK Hair Brown Eyes Brown