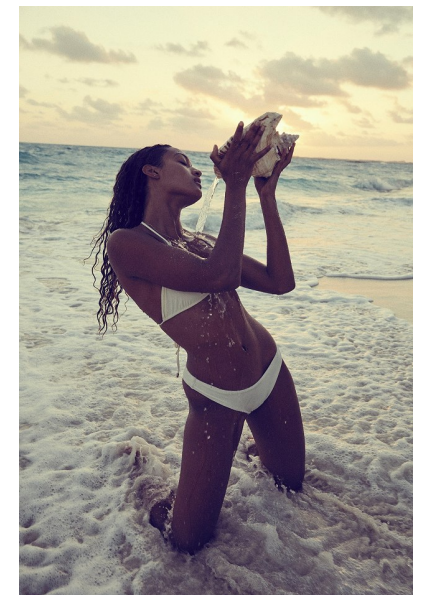
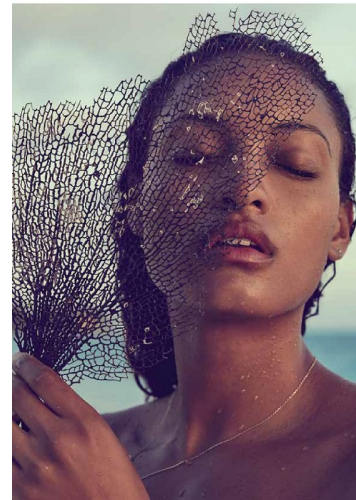




THE FACE
MAGAZINE



NONNY MULHOLLAND

Height 173cm/5'8" Bust 83cm/32.5" Waist 66cm/26" Hips 92cm/36" Dress 8
AUS/4 US/34 EU Shoe 39 EU/8 US/6 UK Hair Brown Eyes Brown



17D Pollen Street
Grey Lynn
Auckland